

# TIMS

## 2019

# School Code Replacement Database

This tool allows TIMS Staff to  
Auto-Assign Students to Another School Code



**ITRE**

Institute for Transportation  
Research and Education

# School Code Replacement Database

---

During the summer, many LEAs will only hold classes at a few school locations, bringing students from multiple schools to a single building for summer classes.

This has historically caused problems in TIMS as students are not assigned to this building and tend to have a different school code during the regular school year.

The School Code Replacement Database allows TIMS Staff to change the student's normal school code to a Summer School Code. With a list of Summer School Students and the building they are assigned to, TIMS Staff can now instantly change the school code for dozen, hundreds and even thousands of students at a time.

# School Code Replacement Database

---

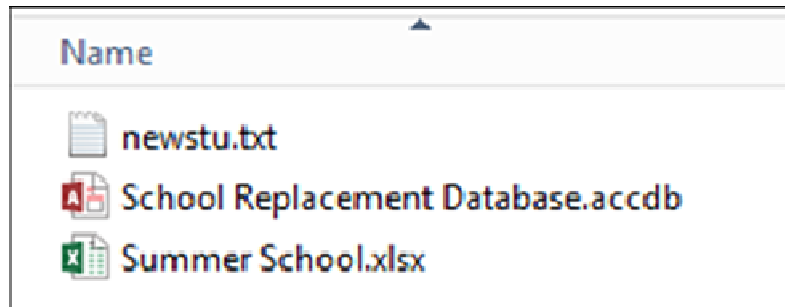
In order for the database to work correctly, TIMS Staff will need the following:

- 1) School Code Replacement Database

(typically located in the D:\School Replacement Database)  School Replacement Database

- 2) TIMS Extract from PowerSchool (newstu.txt)

- 3) Excel Spreadsheet of Students and their Summer School Assignments



# School Code Replacement Database

The Summer School Spreadsheet must contain the following columns:

- Student PowerSchool ID (PSID)
- Summer School Code (SCH)

The following columns are optional, but preferred for TIMS purposes:

- AM Transportation Flag (AM)
- PM Transportation Flag (PM)

	A	B	C	D
1	PSID	SCH	AM	PM
2	12629167	344	Y	Y
3	12629202	339	N	Y
4	12628604	341	Y	N
5	12629074	363	N	Y
6	12629505	357	N	Y
7	12629437	363	N	Y

# School Code Replacement Database

---

## Summer School Spreadsheet – Ridership Codes for AM and PM

If AM and PM Ridership Codes are collected, then TIMS Staff can quickly identify and easily display the students who have requested a bus ride to or from Summer School. This will help produce a much quicker turnover time when developing Summer School Routes.

Historically, TIMS Staff often receive a list of All Students enrolled in Summer School and have no idea which students need Summer Transportation. Please don't let this happened in your LEA.

Speak to the Summer School Coordinator. While it is good for TIMS to know which students are in Summer School, it is more important for TIMS Staff to know which Summer Students require School Bus Transportation.

# School Code Replacement Database

The TIMS Extract from PowerSchool (newstu.txt) contains the Student ID, the regular School Code for the Student and, if being used, the Y's and N's for AM and PM Ridership as entered on the Student Transportation Page of PowerSchool.

Student ID	School Code	AM	PM
08236674525	910308000	Y	Y
01985188	910360000	N	N
01985190	910380000		
012544209	910314000	Y	Y
012462465	910360000	Y	Y
012446524	910314000	Y	Y
012460444	910360000	Y	Y

The School Replacement Database will read the information for each student in the Summer School Spreadsheet and update\replace their regular School Code and regular AM\PM Ridership Codes within the TIMS Extract and produce an updated newstu.txt file.

Staff then use this updated NewStu File during UPSTU into SS Data.

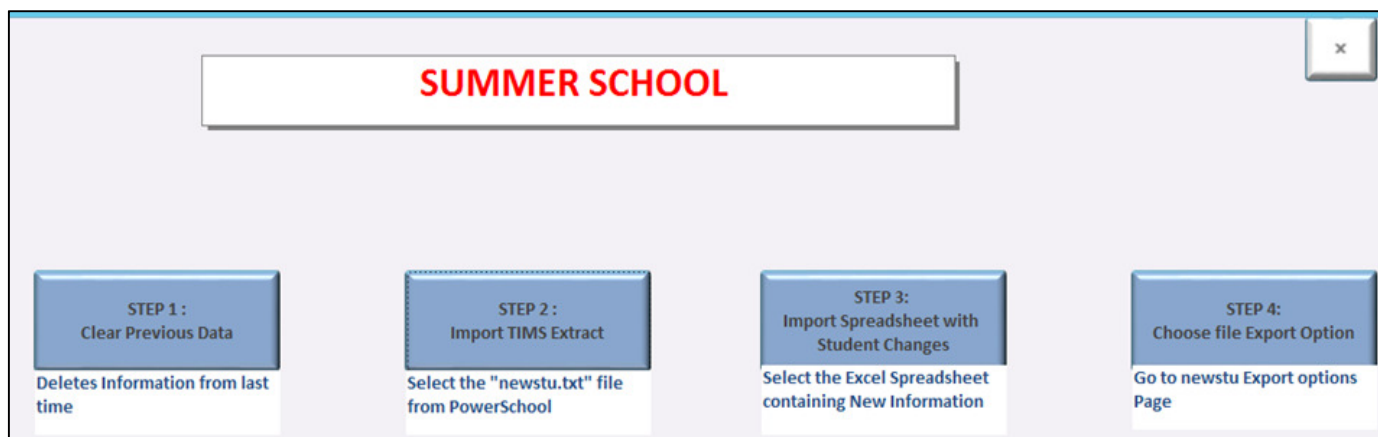
# School Code Replacement Database

## Instructions for Using the School Replacement Database

After opening the Database (typically located in the D:\School Replacement Database folder

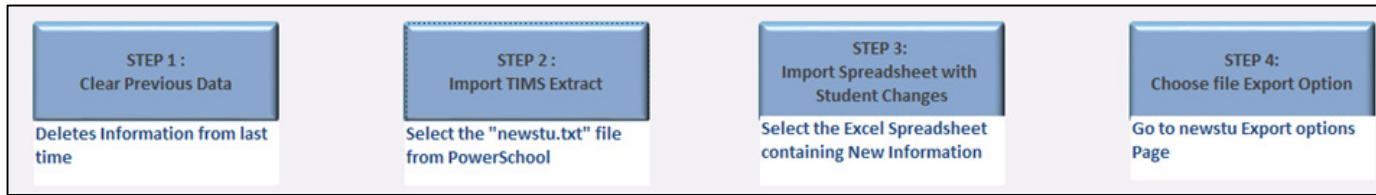


- 1) Clear Previous Data
- 2) Import TIMS Extract
- 3) Import Student Spreadsheet
- 4) Choose Export Option

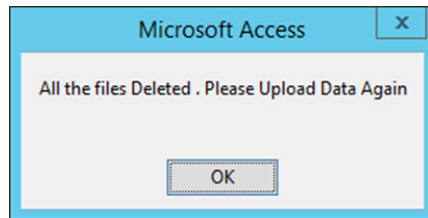


# School Code Replacement Database

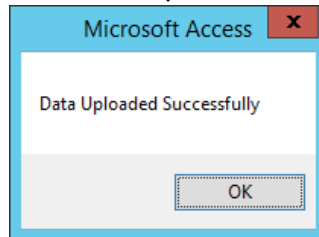
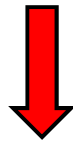
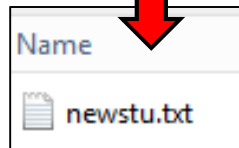
## Instructions for Using the School Replacement Database



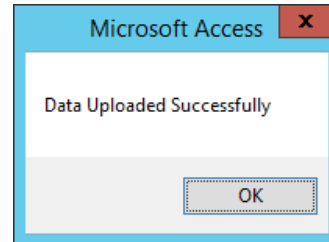
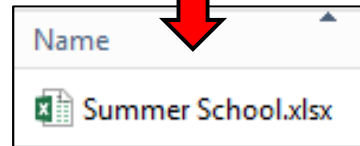
Click the Step 1 Button to Clear Previous Data



Click the Step 2 Button. Then browse to and select the most recent TIMS Extract

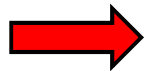


Click the Step 3 Button. Then browse to and select the Excel Spreadsheet

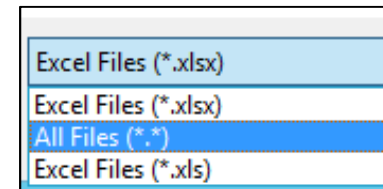


After Importing the NewStu.txt and Excel Spreadsheet;

Click the Step 4 Button to visit the Export Options Page



*You may need to view All Files to see Different versions of Excel Spreadsheets.*





# School Code Replacement Database

---

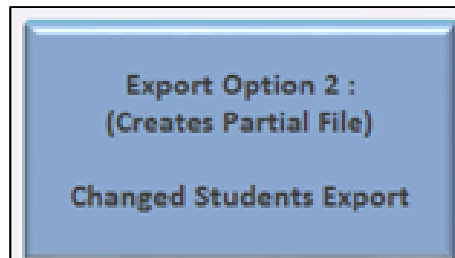
There are two options for Exporting the Updated Student Information into an UpStu File.

## **Option 1: All Students Export (Recommended)**

This option produces a complete TIMS Extract containing all students with and without changes to their School Code and Ridership Codes.

## **Option 2: Changed Students Export Only**

This option produces a TIMS Extract containing only the students that were listed in the Excel Spreadsheet. All other students (non-summer) would not be included in the TIMS Extract.



*The All Students Export is recommended as operators may need all students within the TIMS Summer School Dataset in case assignments change and more students are added to the Summer Program at the last minute.*

# School Code Replacement Database

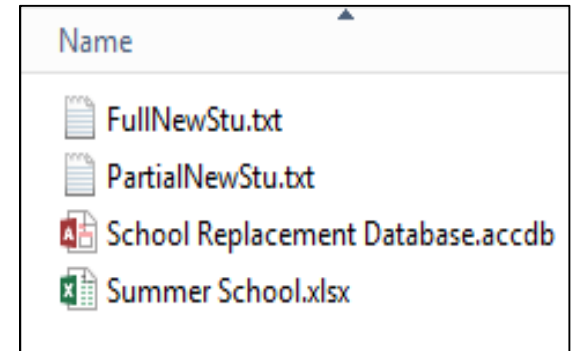
---

## **Export Option 1:**

All Students Export will create a file named FullNewStu.txt in the same folder as the School Replacement Database

## **Export Option 2:**

Changed Students Export will create a file name PartialNewStu.txt in the same folder as the School Replacement Database.



TIMS Staff then take this Text File and use it to UPSTU into the TIMS Summer School Dataset.

Rename the file to newstu.dat and place in it TIMS Database used for Summer School

Example: ELT\SS\Server\Export

After then completing an UPSTU, all students will now be assigned to their Summer School Code as listed in the Excel Spreadsheet.

# TIMS

## 2019

# School Code Replacement Database

This tool allows TIMS Staff to  
Auto-Assign Students to Another School Code



**ITRE**

Institute for Transportation  
Research and Education