

School to School Distance Matrix

SETUP

NOTE: This matrix is not a part of the regular Edulog.nt reports so you will have to create a few batches in EMU to process and populate the necessary tables to produce the report. Creating these batches is a one-time process. Once they have been created, they will always be available unless you delete them.

- 1) Create a batch in ELT\EXE\EMU named SCHDST.BAT

NOTE: This batch can be created by copying another .bat file in the EMU folder then, editing two of the fields and then renaming the file, or you can create a batch from scratch using Notepad. Either way, the contents should look like the following:

```
@echo off
```

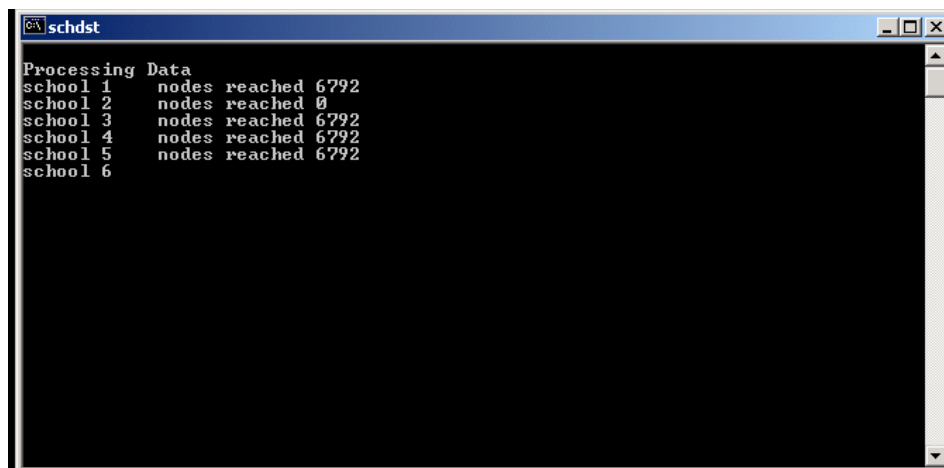
```
start "schdst" %ELTDRIVE%\ELT\EXE\EMU\schdst.exe %HOMEDRIVE%\USERS%\%USERNAME%\ELTRANSSERVICE.CFG
```

- 2) Create a batch in ELT\EXE\EMU named DUMPSCHDST.BAT

NOTE: Create this batch just like the one above substituting "schdst" for "dumpschdst" and schdst.exe for dumpschdst.exe

RUN THE REPORT

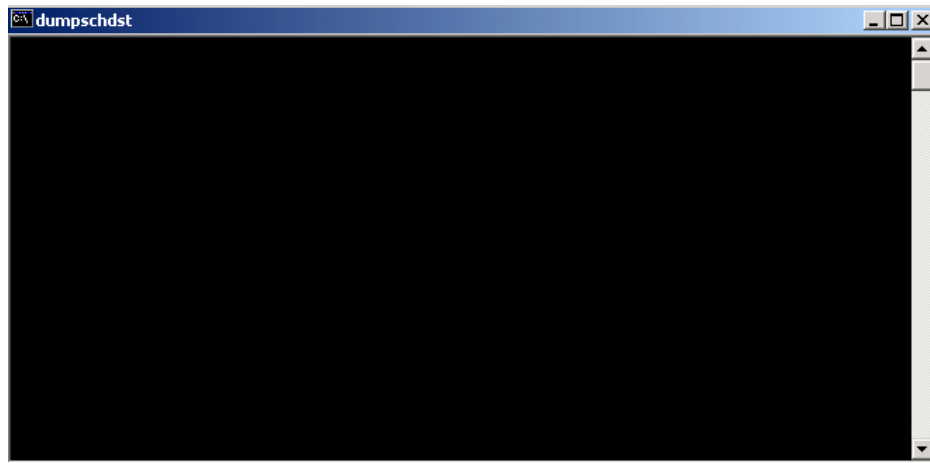
- 1) From ELT\EXE\EMU, double-click on SCHDST.BAT



```
schdst
Processing Data
school 1 nodes reached 6792
school 2 nodes reached 0
school 3 nodes reached 6792
school 4 nodes reached 6792
school 5 nodes reached 6792
school 6
```

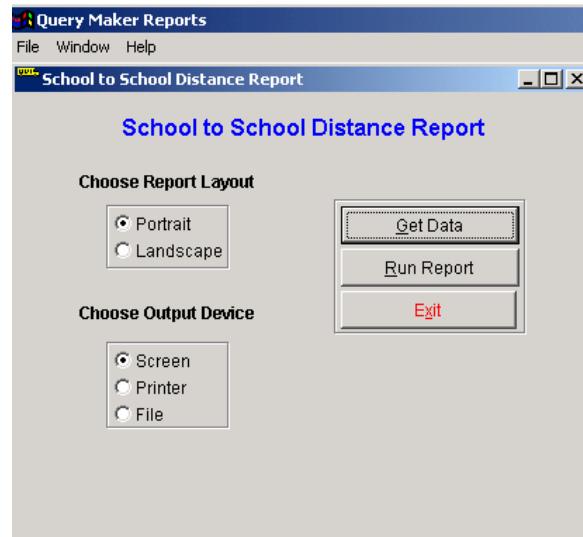
A dos window will open and you will see your school data processing. When this process is complete, the dos window will close.

2) From ELT\EXE\EMU, double-click on DUMPSCHDST.BAT



A blank dos window will flash open and close quickly.

3) From ELT\EXE\REPORT, double-click on SCDSRP.EXE



The **School to School Distance Report** window appears.

- 4) Click the **Get Data** button, then the **Run Report** button when the system is finished gathering the data.
- 5) **Choose Output Device:** The report can be viewed on **Screen**, **Printed** or sent to a **File**. The report is oddly formatted and does not list all of the schools across the top of the report as in PTSIII. If the file is saved as a disk file and brought in to Excel, you can “cut and paste” to bring all of the schools to appear across the top.