

## EXTEND STREET

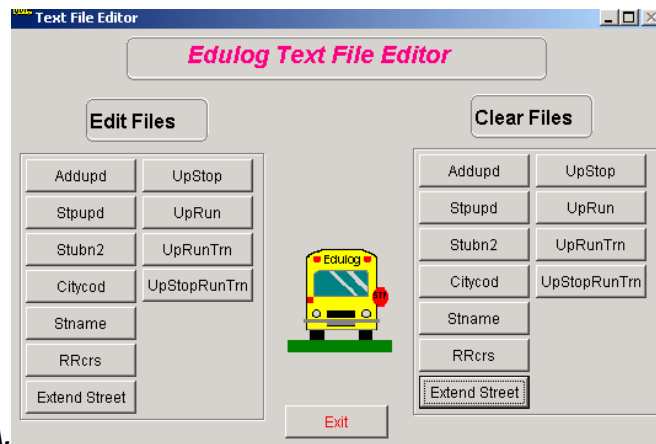
The **EXTENDSTREET** program will take a text file that has the original streets with shortened names and replace that short name with the full name. These instructions will guide you through the process of building the necessary input file.

1. In **PTSIII** (old TIMS program), run UNISTR in System Maintenance (#48)
2. Save to disk file, take the default name (TMP:STREET.LST)
3. using notepad, delete all street names in the file STREET.LST that are not abbreviated or to be changed. (Notepad is located in start>programs>accessories>notepad)
4. Rename the file STREET.XXX (XXX=your Lea ID)
5. Send this file to your project office. (notify by email that your file has been sent)
6. **Stop here and wait until your project leader returns your modified file.** Your project office will make additional changes to your file and return it for further processing.
7. After receiving the file back from your project office, Save it on the root of your **C:** Drive.
8. Create a shortcut icon of buildtxt.exe on your desktop to allow easy access to the editing program. In Windows Explorer, go to the drive where your ELT is and browse to the following file (this example assumes that the ELT is on the D drive); **D:\El\Exe\Report\Buildtxt.exe**
  - To create a shortcut on your desktop, right-click on this file and **hold** the button down, while doing this, drag it to your desktop. Release the button and choose "Create shortcut here" (you can't do this if you have Explorer in FULL screen mode).
9. You are ready to begin. Double-click on your buildtxt shortcut to start the program

**Figure A.**

Under **Clear Files**, click **Extend Street**. Choose 'YES' when asked if you want to clear extendst.dbf.

Under **Edit Files**, click **Extend Street**.

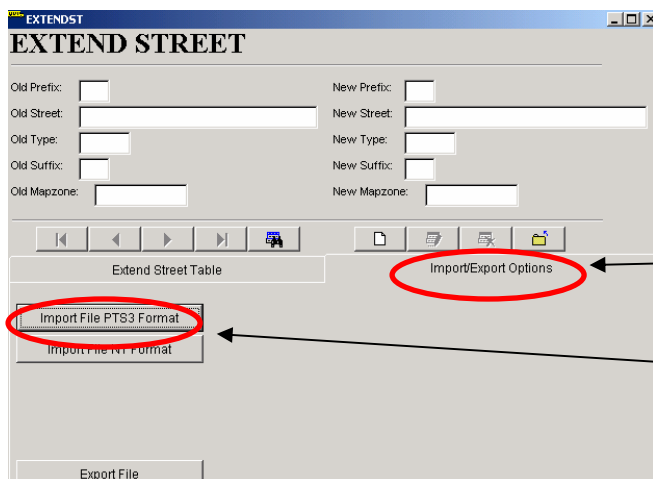


**A.**

**Figure B.**

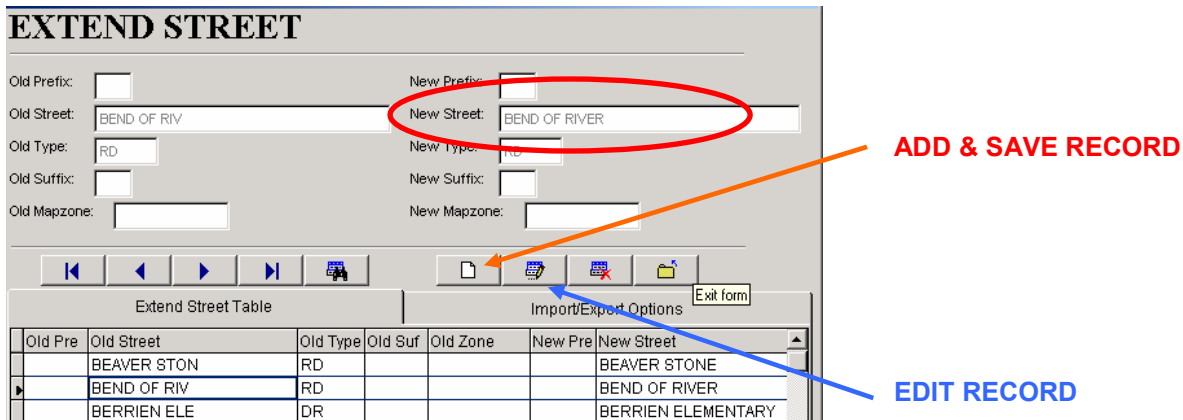
There are two tabs **Extend Street Table** and **Import/Export Options**. Select **Import/Export Options**.

Select **Import File PTS3 Format**, browse to your Street.xxx and import it into buildtxt.



**B.**

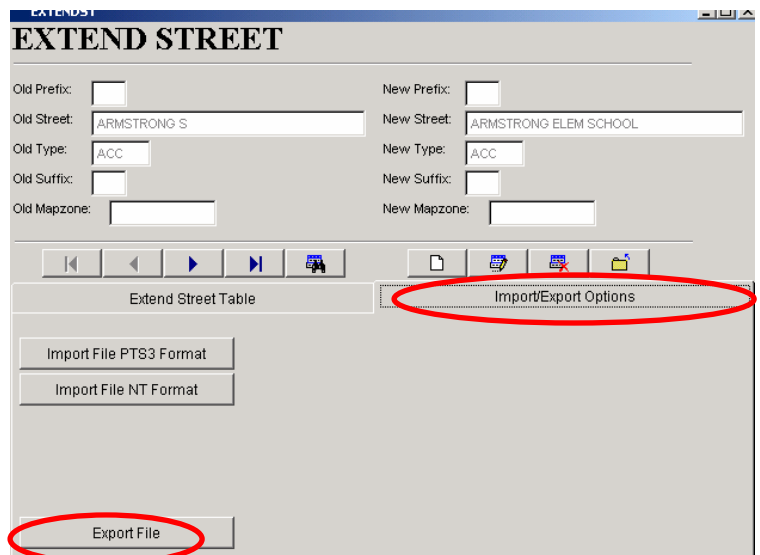
10. Click on the **Extend Street Table** tab.
11. Select the **Edit** Icon and you can begin entering the new full name for each entry.
12. Highlight the New Street name field and edit the name.



13. When finished editing your street names, click on the **Add/Save record** button.

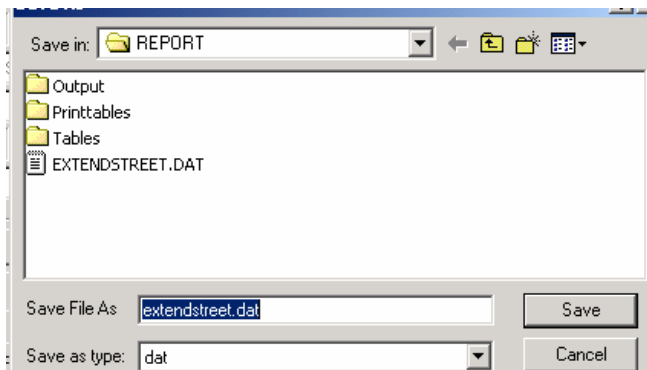
14. Click the **Import/Export Options** tab

15. Select **Export File**

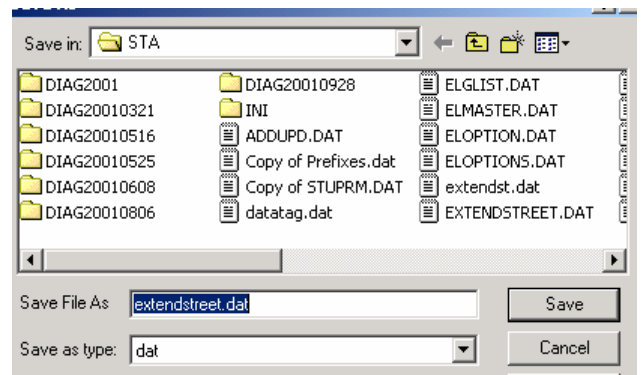


16. You must Export the EXTENDSTREET.DAT file to the two locations shown below (overwrite any existing extendstreet.dat files if prompted).

**D:\Eit\Exe\REPORT** - then click **SAVE**



**D:\Eit\Server\STA** - then click **SAVE**



17. Exit the Buildtxt program.

18. **The Final procedure will require using Windows Explorer.**

**Important Note:** The following batches will fail to run correctly if you have not set up ELTDRIIVE as one of your system variables (refer to TRG-NT 5a/b). **If you are not sure about this setting, call your project leader before continuing.**

Explore to your ELT\EXE\EMU folder. Double-click on each batch in the order shown....

1. **EXTENDSTREET.BAT**
2. **ADDUPD.BAT**
3. **STPUPD.BAT**
4. **UPDRESADDRFROMLOC.BAT \*\*\*\*\*(before running read important note below)**

**\*\*\*\*\* UPDRESADDRFROMLOC is a program that will change your students' residence addresses. Only run it if your SIMS operators have been using full street names or are switching to full street names before running the next TIMSbuild. If your SIMS operators have been using abbreviated street names and are not switching to full street names, at your next upstu you will lose the location and assignment of any student whose residence address is changed by this program. If you have any questions, call your project leader**

Verify in EdulogNT that the short street names are now long street names. If not, call your project leader.

-Done-

Note: This information not generally needed by site personnel.

Street Data Positions if building an extend street file from an ascii editor. Once built, it is recommended that this file be imported into BUILDTEXT and exported to the final file to be sure that all settings are correct.

Also, be aware that if you use the PTS3 format, you will have the short filename on both the old and new sides. If you need to convert to the long street name on the new side, you must use the NT format allowing for long names on the old side, even though you only need a short field.

**OLD**

ITEM	NT POSITION(S)	PTS3 POSITION(S)
PRE	1-2	1-2
space	3	3
STREET NAME	4-35	4-14
space	36	15
TYPE	37-40	16-19
space	41	20
SUF	42-43	21-22
space	44	23
ZONE	45-54	n/a
Space	55	24

**NEW**

ITEM	NT POSITION(S)	PTS3 POSITION(S)
PRE	56-57	25-26
space	58	27
STREET NAME	59-90	28-38
space	91	39
TYPE	92-95	40-43
space	96	44
SUF	97-98	45-46
space	99	47
ZONE	100-109	n/a