

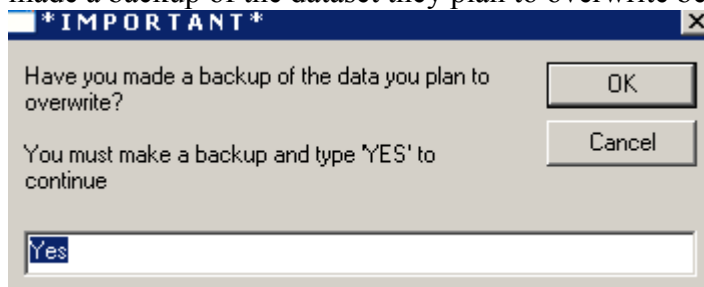
Copy Datasets v2.exe

This program was created to help TIMS Data Managers copy datasets from one database to another. It is designed to work with the Edulognt version 10.5 folder structure.

The dataset folders that are copied are GEO, DYN and GRF. The only exception is if the GIS dataset is being copied. The GIS dataset is generally where geocode edits are made and often contains no transportation data. Therefore, only the GEO folder is copied to the destination dataset(s), preserving existing students and transportation.

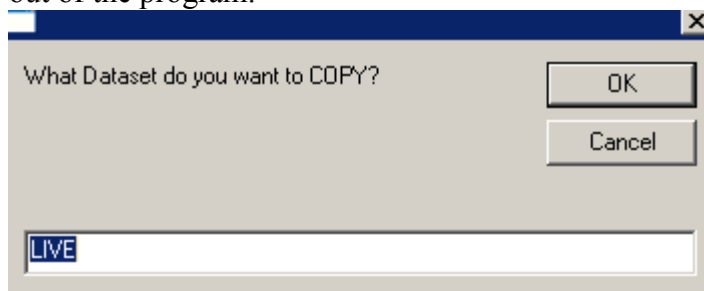
Copy Datasets does not need to be installed. It can be downloaded and run wherever it resides on the Server (directly or via a shortcut). It is programmed to look for the ELT on the drive as defined by the Server's Environment Variable ELTDRIVE. If the Environment variable, *eltdrive*, has not been set, the program defaults to drive D:.

Copy Datasets has an interface that is easy to use while also helping to eliminate the possibility of errors when copying data. For example, an operator must confirm that they made a backup of the dataset they plan to overwrite before being allowed to continue.



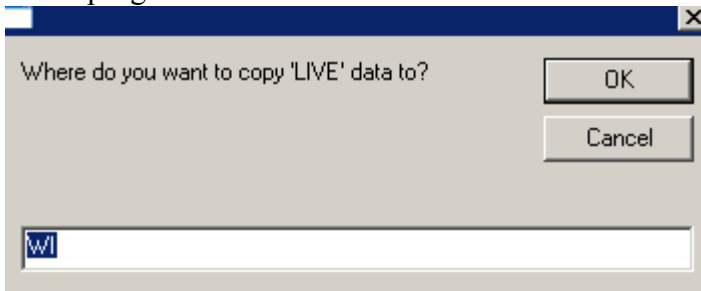
Here, the operator must enter “Y” or “YES” to proceed.

Next, they are prompted to enter the name of the dataset that they will be copying. If they enter a dataset name that does not exist, they will be notified of that fact and kicked out of the program.



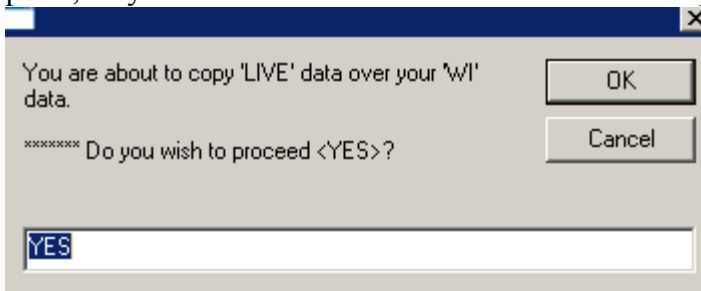
LIVE is the default dataset to be copied.

The Data Manager is now prompted for a dataset to be overwritten with the dataset they're copying. The destination folder must exist or they will be notified and kicked out of the program.



WI is the default dataset.

The operator receives a final notification of what is going to be copied and where. At this point, they can either cancel or enter "NO" to exit the program without any changes.



If they opt to continue, DOS screens will appear showing the progress of the copying. A small notification box will also appear telling the operator which dataset was updated.

