

8. Find Service Manuals in TurboDoc.

Equipment Number: 6064-3004

VIN: 1FTEF15N9TLB27458

Manufacturer: FORD MOTOR COMPANY (FORDX)

Model or Component: F150-1996:ENG FORD 302 SN UNKN

Vehicle System: FAN - ENGINE --- 042003

Image Description

- PARTS-COMPRESSOR INSTALLATION - INTEGRAL - 6 CYL. 4.9L, F150/350
- PARTS-COMPRESSOR INSTALLATION - INTEGRAL - 8 CYL. 7.3L DIESEL - PAGE A, F250/350(SUPER DUTY)
- PARTS-COMPRESSOR INSTALLATION - INTEGRAL - 8 CYL. 7.5L, F250/350, F(SUPER DUTY)
- PARTS-COMPRESSOR INSTALLATION - INTEGRAL - 8 CYL. 7.5L, F53 (STRIPPED CHASSIS)
- PARTS-PUMP INSTALLATION - 6 CYL. 4.9L, F150/350
- PARTS-PUMP INSTALLATION - 8 CYL. 7.3L DIESEL, F250/350
- PARTS-PUMP INSTALLATION - 8 CYL. 7.5L, F250/350
- PARTS-VACUUM PUMP, TENSIONER ASSY AND RELATED PARTS - TURBO DIRECT INJECTION, F250/350, F(SUPER
- PARTS-COOLING SYSTEM AND RELATED PARTS - 6 CYL. 4.9L, F150/350
- SERVICE-ENGINE COOLING
- PARTS-PUMP INSTALLATION - 8 CYL. 7.3L DIESEL, F(SUPER DUTY)
- PARTS-COMPRESSOR INSTALLATION - INTEGRAL - 8 CYL. 5.0L AND 5.8L, F150/350, F(SUPER DUTY)
- PARTS-PUMP INSTALLATION - 8 CYL. 5.0L, F150/350
- PARTS-PUMP INSTALLATION - 8 CYL. 5.8L, F150/350

We want to access service information relating to **diagnostics and testing** of the **fan clutch** for a **1996 Ford F150** vehicle.

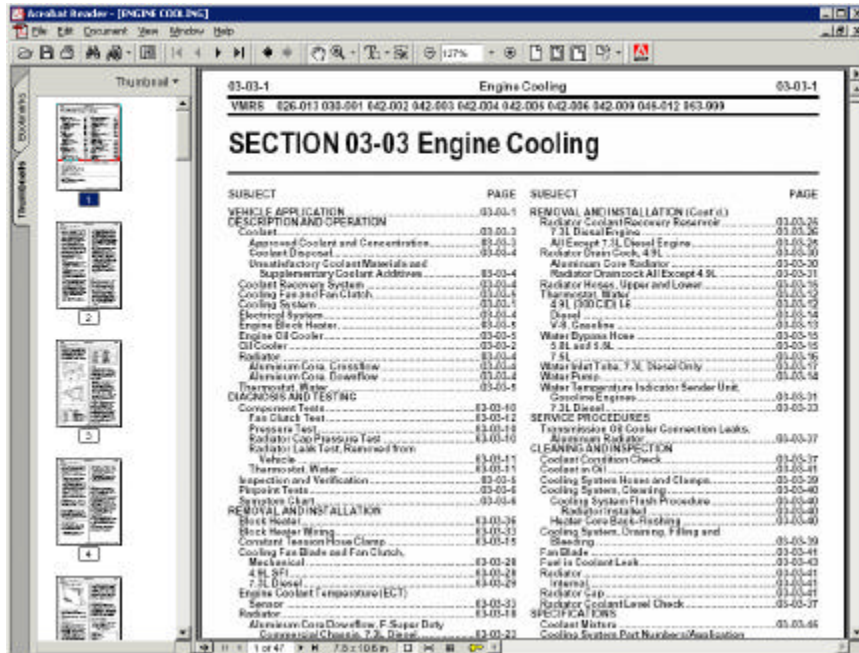
To access **TurboDoc**, click the **TurboDoc** icon  in the tool bar.

Click  To **CLEAR THIS SCREEN.**

To initiate TurboDoc, key in the **LEA Number (6064-3004)** in the **Equipment Number** window and press **Enter**. Note the information displayed in the **Vin**, **Manufacturer** and **Model or Component** windows. Here we have selected a **1996 FORD F150**.

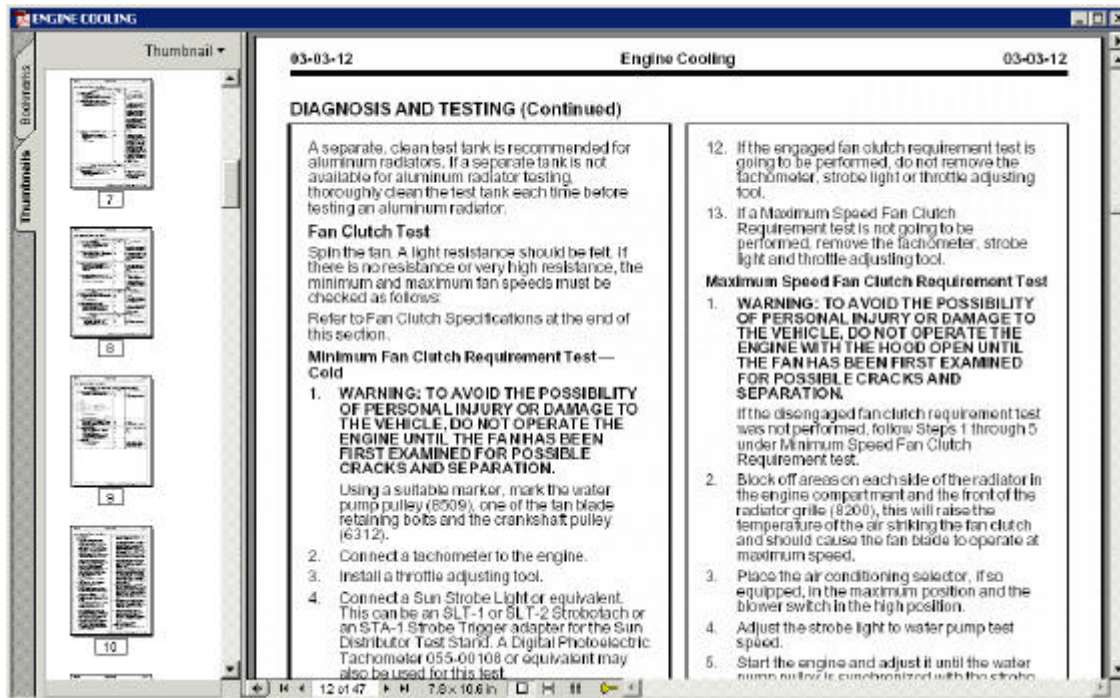
Click the down arrow in the **Vehicle System** window and scroll to and click on **VMRS Code 042003** and press enter or key in **FAN**.

Then, in the Image description window, scroll down and double click on the Service Manual **SERVICE-ENGINE COOLING**.



Here is the **Index** for **Service Manual Engine Cooling** information available for the 1996 Ford F150.

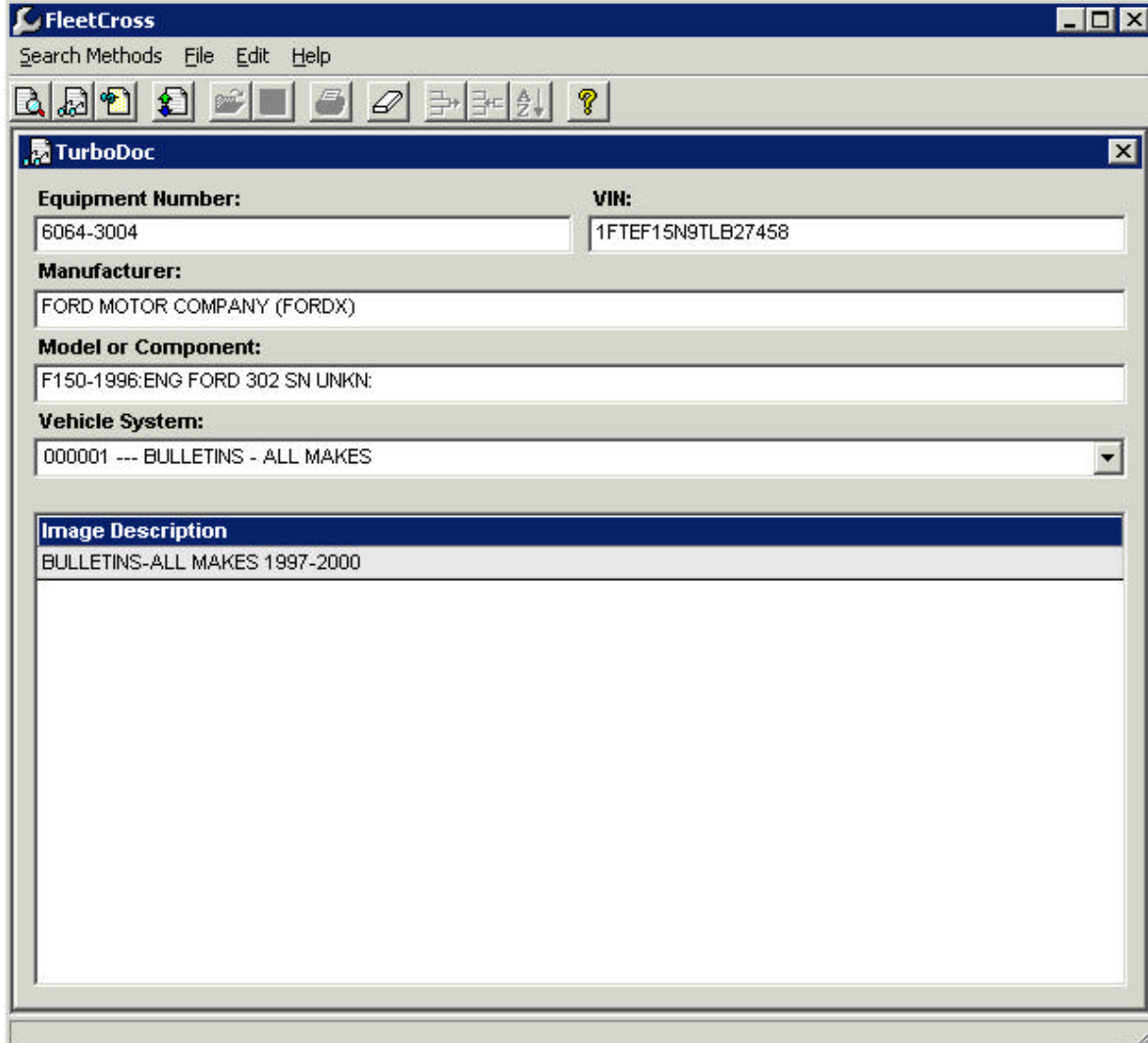
Click on **Fan Clutch Test** (Under the Heading **Diagnosis and Testing**).



Here is the **Diagnostic and Testing** information for the **Fan Clutch**. Any TurboDoc information can be printed out for on-site repair reference.

Close **ACROBAT** .

9. Find Bulletin Information



The screenshot shows the FleetCross TurboDoc application window. The window title is "FleetCross" and it has a menu bar with "Search Methods", "File", "Edit", and "Help". Below the menu bar is a toolbar with various icons. The main window is titled "TurboDoc" and contains the following fields:

Equipment Number:	VIN:
6064-3004	1FTEF15N9TLB27458
Manufacturer:	
FORD MOTOR COMPANY (FORDX)	
Model or Component:	
F150-1996:ENG FORD 302 SN UNKN:	
Vehicle System:	
000001 --- BULLETINS - ALL MAKES	

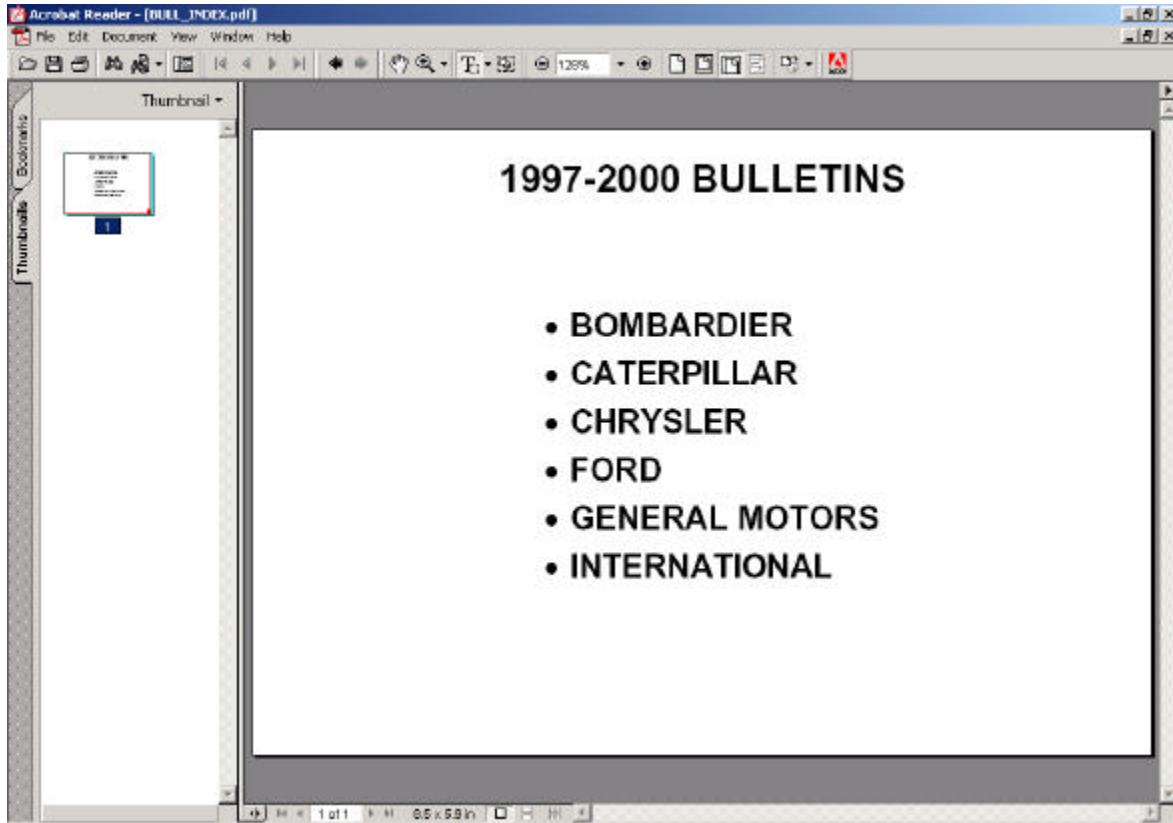
Below the fields is a section titled "Image Description" with the text "BULLETINS-ALL MAKES 1997-2000".

We are now looking for **Bulletins** relating to the same **1996 Ford F150**. We want to look for **bulletin information** relating to **BRAKES-Elimination of Sanding Rotors and Drums**.

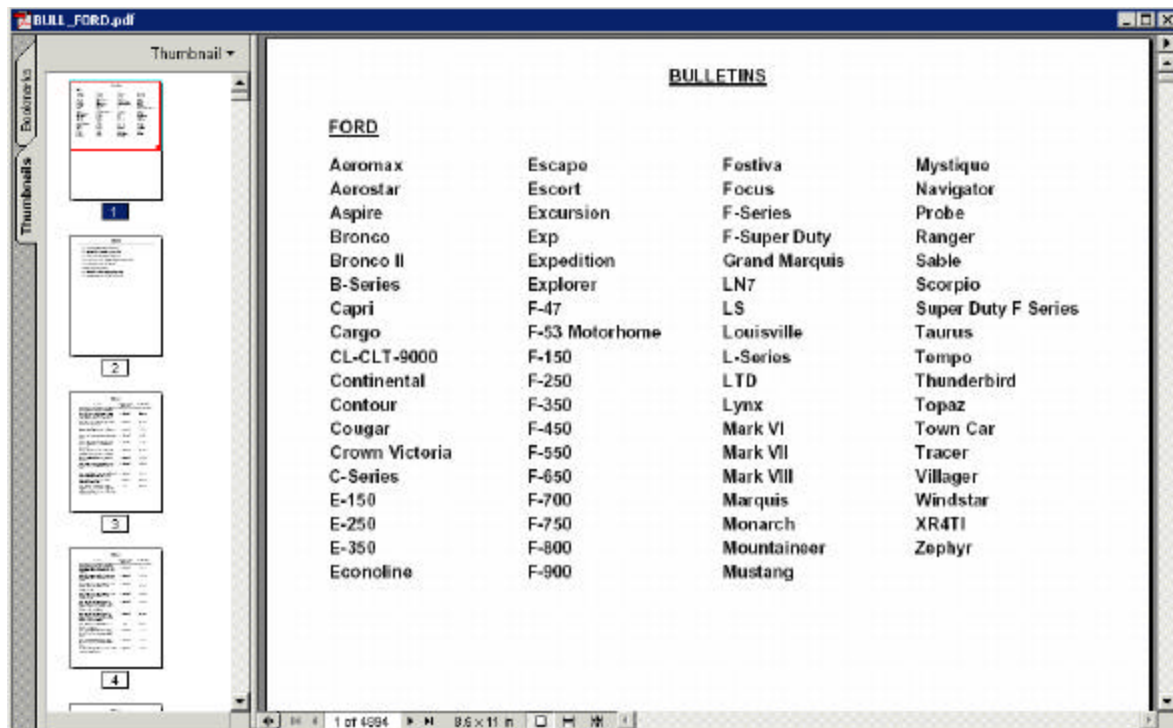
Click the **Down Arrow**  button in the Vehicle System window.

Select and Click **000001 --- BULLETINS – ALL MAKES**

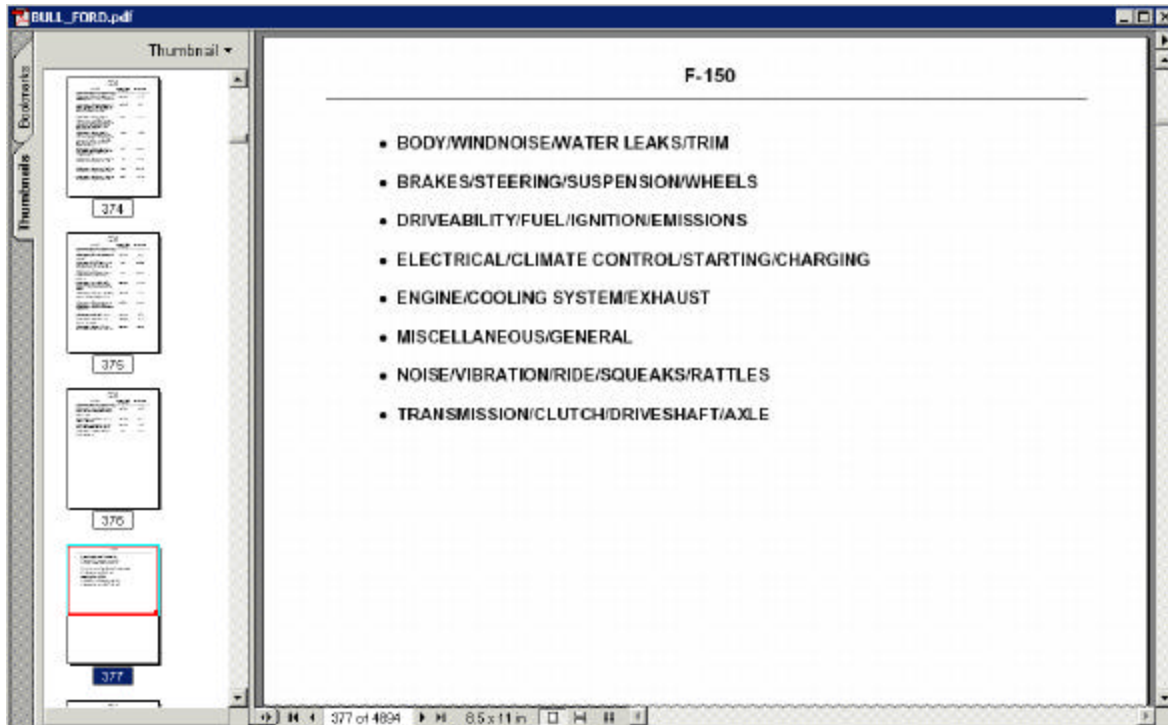
Double click on **BULLETINS-ALL MAKES 1997-2000**.



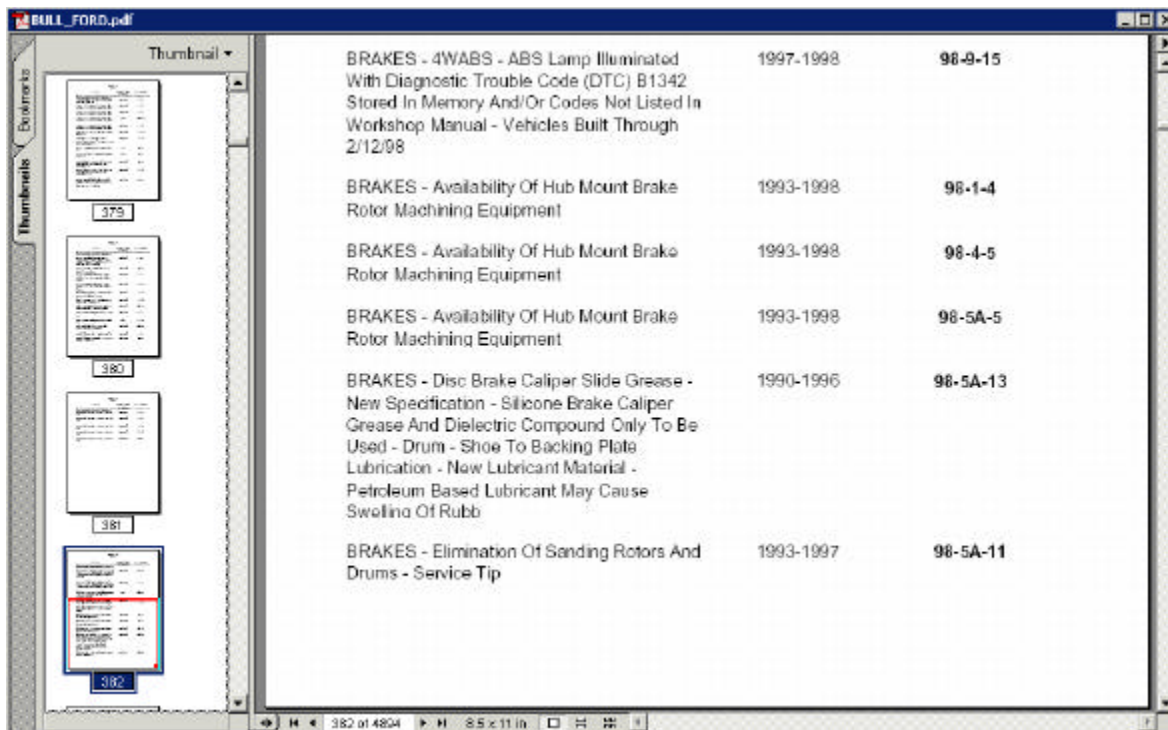
Select **FORD**.



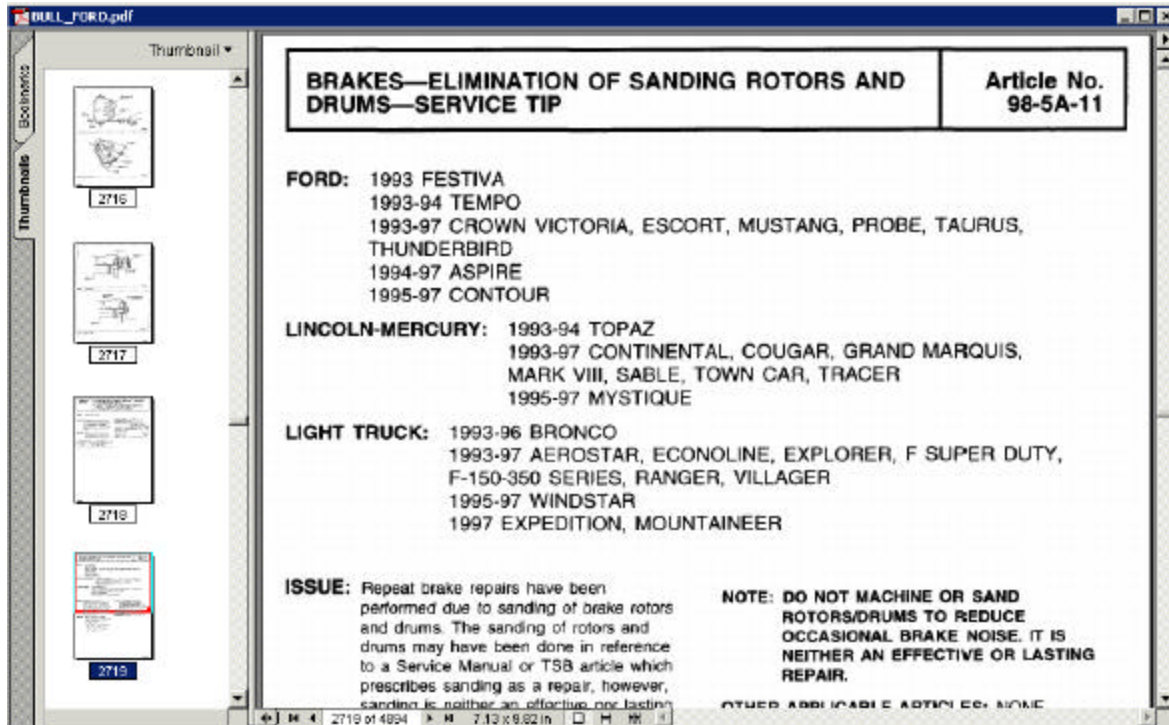
Select **F-150**.



Select **BRAKES/STEERING/SUSPENSION/WHEELS**.



Scroll down and select **BRAKES-Elimination of Sanding Rotors and Drums**.

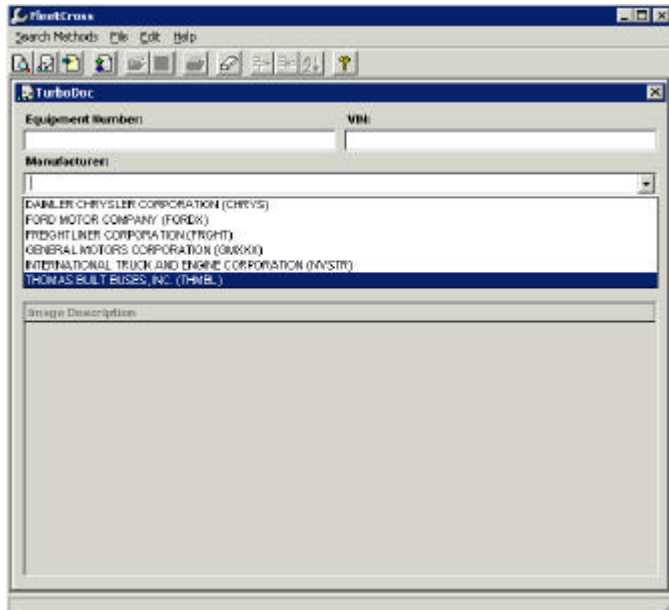


Note the **bulletin information** regarding the **Elimination of Sanding Rotors and Drums**


Close **ACROBAT** .

Click **ERASER ICON**  IN TURBODOC TO **CLEAR THE SCREEN**.

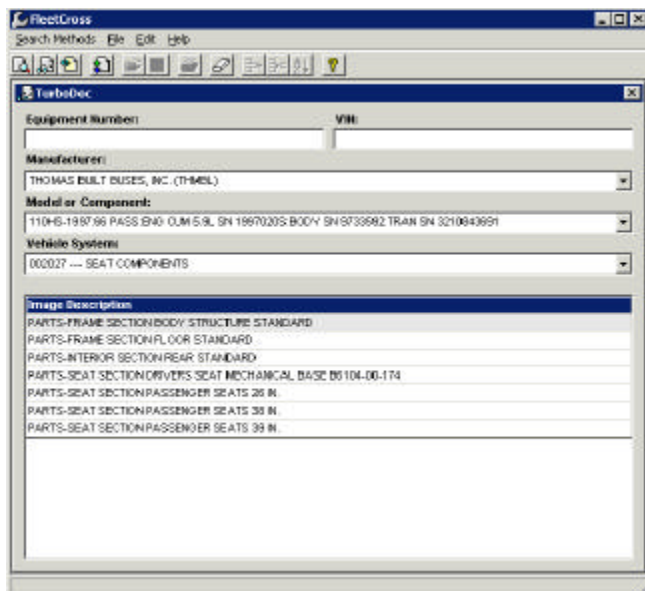
10. Find Manufacturer Parts and Service Information Using TurboDoc




We are replacing the **outer suspension arm assembly** for the driver's seat in a 1997 66 passenger Thomas Built Bus.


Click the down arrow  button in the empty **Manufacturer** window.

Select **THOMAS BUILT BUSES, INC.**



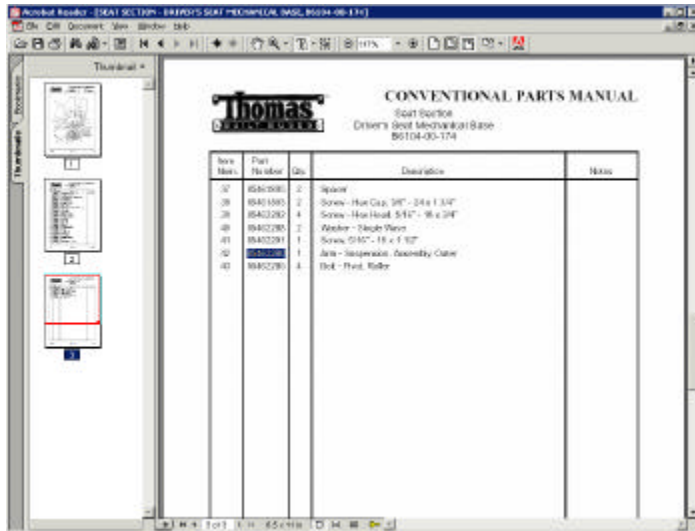
Click the down arrow  button in the empty **Model or Component** window.

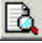

Click the first selection **110 HS-1997; 66 PASS: ENG CUM 5.9L . . .**

Click the down arrow  button in the empty **Vehicle System** window.

Select **00027 --- SEAT COMPONENTS.**


Double Click **PARTS-SEAT SECTION DRIVERS SEAT MECHANICAL BASE B6104-00-174.**



To copy the part number for the **OUTER SUSPENSION ARM ASSEMBLY** into **TurboSearch+** , scroll to the top of Page Three. Click on the  Text Tool at the top of the screen

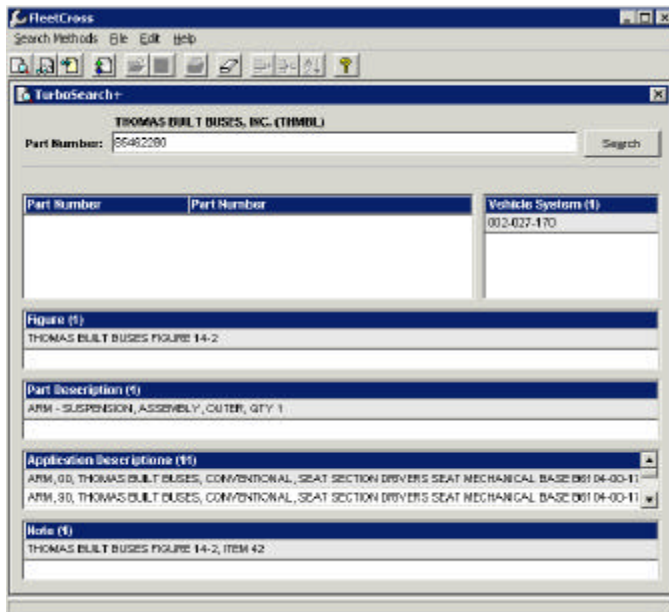
Click on part number **85462280 (Arm-Suspension, Assembly, Outer)** to highlight.

Right click and then **left click Copy**.

Close the **screen** by **clicking** on the  in the upper right hand corner.

Click on **TurboSearch+**  in the tool bar menu.

Click ERASER ICON  **TO CLEAR THIS SCREEN.**



Left click and then Right click to Paste **part number** into **Part Number** window. Click **Search**.

11. Find Ford Part Illustrations And Numbers.

The screenshot shows the FleetCross TurboDoc application window. The main window has a menu bar with 'Search Methods', 'File', 'Edit', and 'Help'. Below the menu bar is a toolbar with various icons. The TurboDoc window is titled 'TurboDoc' and contains the following fields:

- Equipment Number:** 6033-3002
- VIN:** 1FTRF17L7WNB30252
- Manufacturer:** FORD MOTOR COMPANY (FORDX)
- Model or Component:** F150-1998:ENG FORD 5.4L SN UNKN:
- Vehicle System:** 016003 --- SHOCK ABSORBERS - FRONT

Below these fields is an 'Image Description' section with a list of items:

- SERVICE-FRONT SUSPENSION - (4X2)
- SERVICE-FRONT SUSPENSION - (4X4)
- SERVICE-SUSPENSION SYSTEM - GENERAL INFORMATION
- PARTS-FRONT SUSPENSION - LOAD LEVELING - PAGE B - 4X4, F250-UNDER 8500 LB GVW
- PARTS-FRONT SUSPENSION - 4X2, F150**
- PARTS-FRONT SUSPENSION, 4X4 - PAGE A, F150/250
- PARTS-FRONT SUSPENSION - LOAD LEVELING - PAGE B - 4X2, F250-UNDER 8500 LB GVW
- PARTS-REAR SUSPENSION - LOAD LEVELING - PAGE C, F250-UNDER 8500 LB GVW

We are looking for the **Shock Absorber Kit Part Number** for a **1998 Ford 4X2 F150 Front Suspension, LEA Number 6033-3002**.

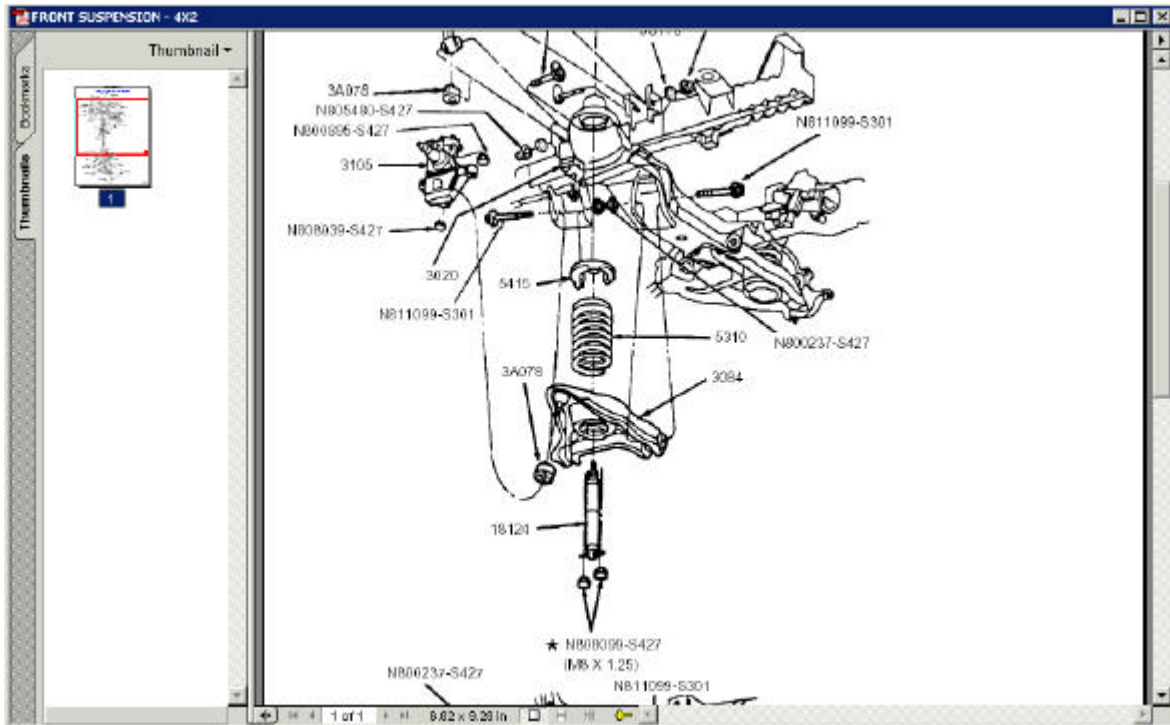
Click **TurboDoc** .

Click ERASER ICON  TO CLEAR.

Enter **Ford LEA Number 6033-3002** in the Equipment Number Window. Press **Enter** Key.

Then, in the **Vehicle Systems Window**, click the Down Arrow  Button and Scroll Down. Click 016003 --- SHOCK ABSORBERS - FRONT.


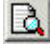

In the **Image Description Window**, double click on PARTS-FRONT SUSPENSION, 4X2, F150.



Here is the Ford parts illustration for the **F150, 4x2 Front Suspension**.

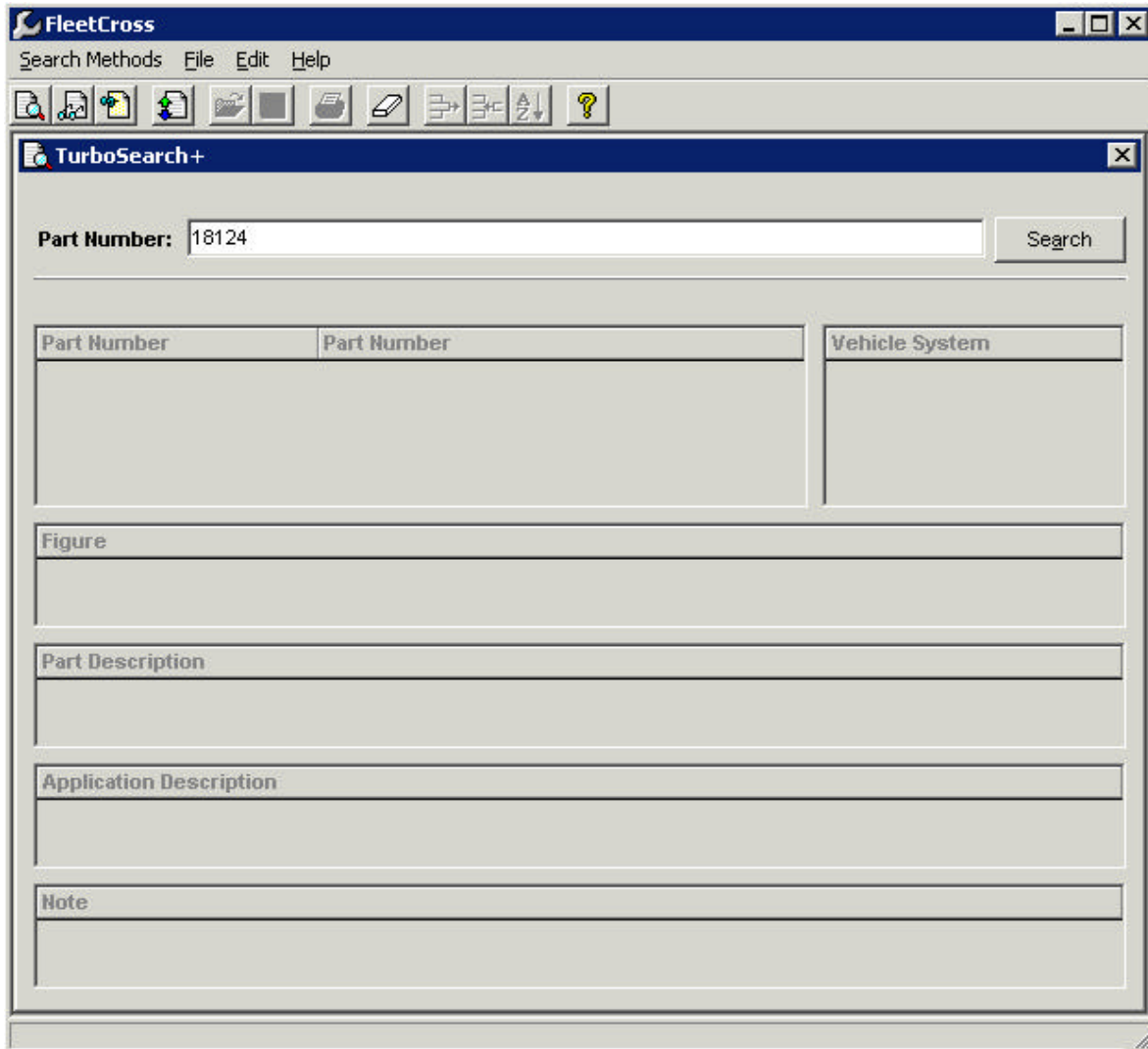
Note that the **shock absorber number** is **18124**. This is the base or core shock number, which is contained in the center of the **Ford part number**.

Copy it for look-up in FleetCross TurboSearch+ .

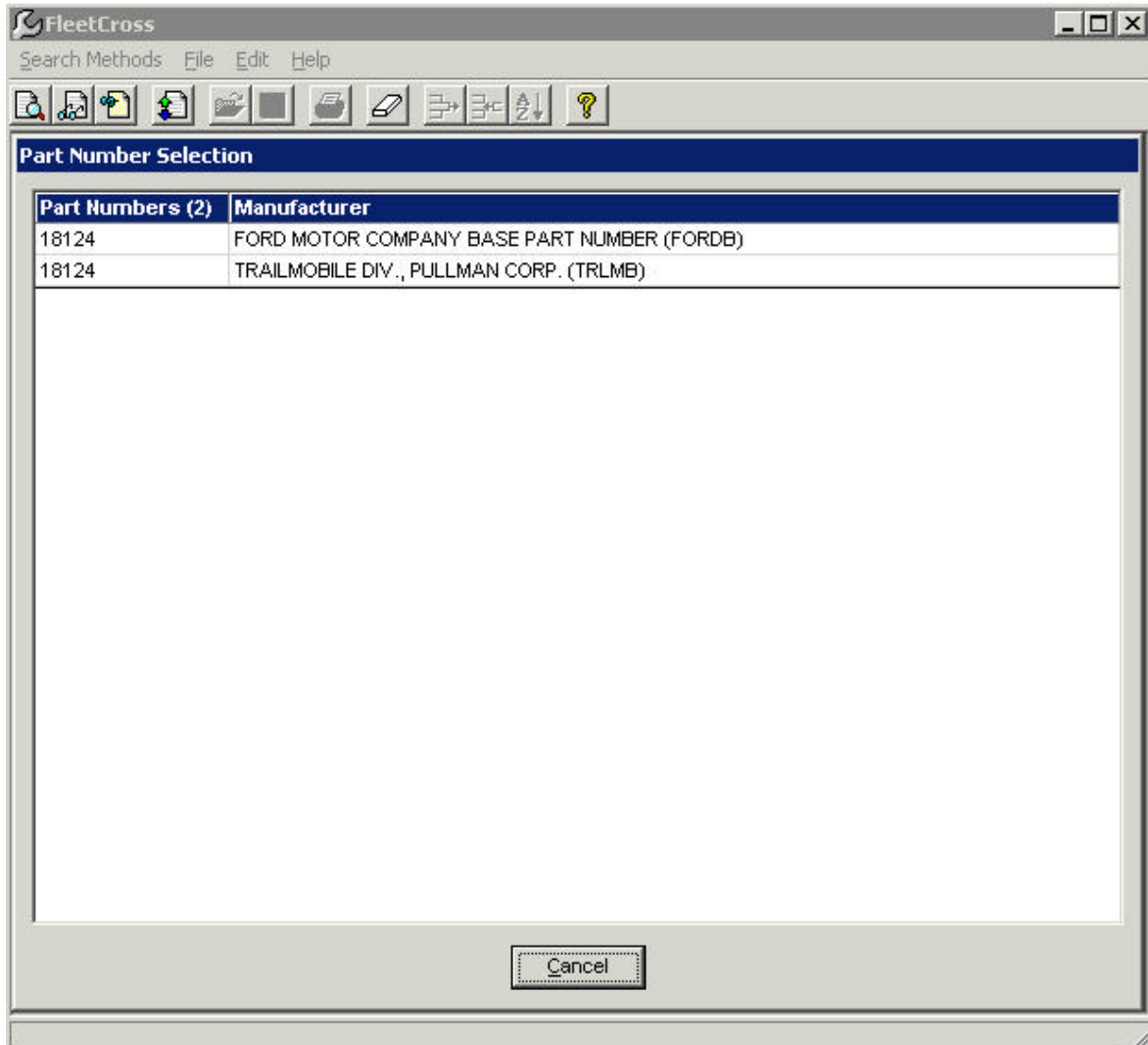
Do this by clicking on the  Text Tool at the top of the screen. **Click** on the part number **18124** to highlight it. Then right click and copy it for look-up in FleetCross TurboSearch+ . Close **Adobe Acrobat** .

Click the **TurboSearch+**  icon in the tool bar.

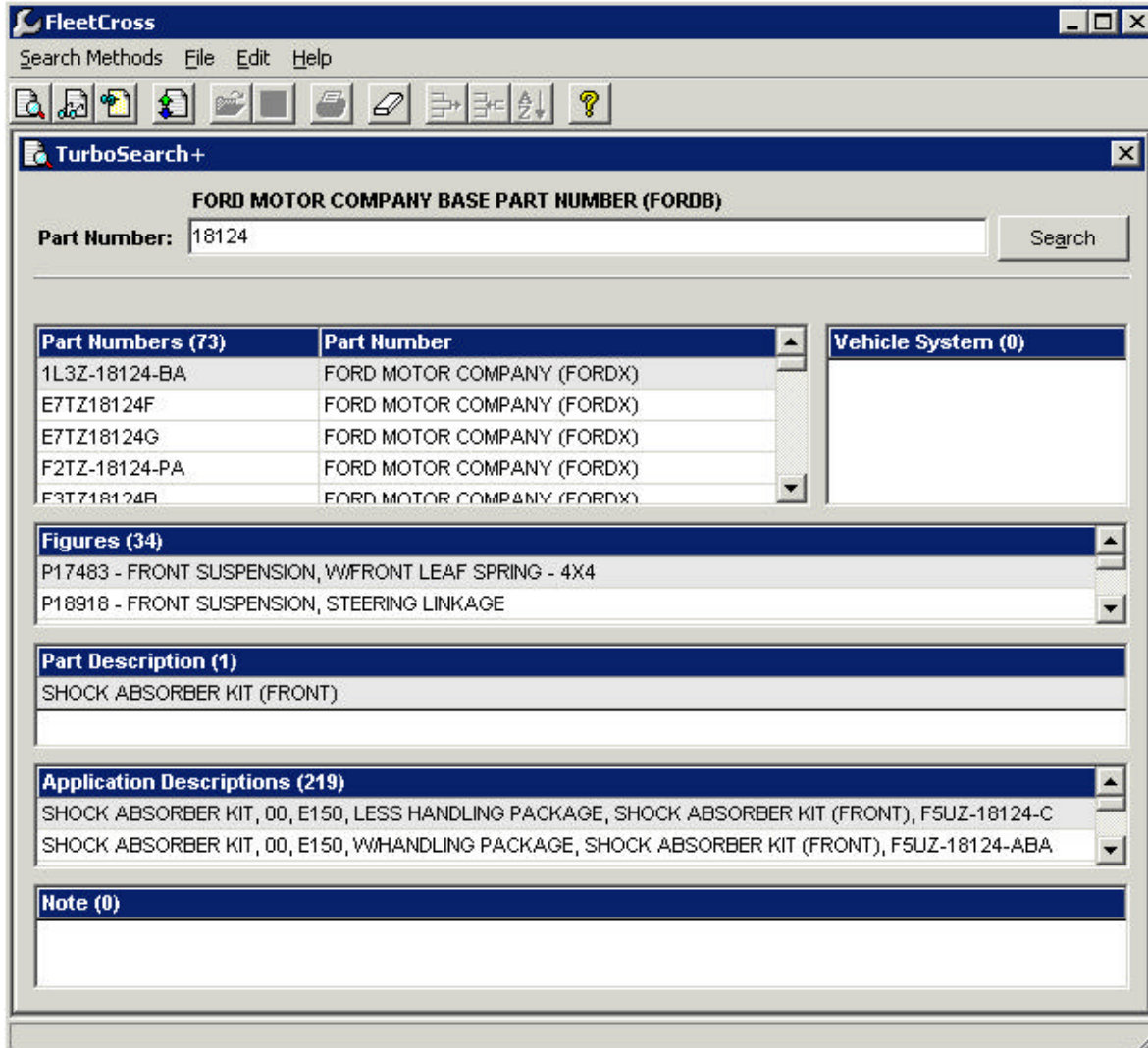
Click ERASER ICON  TO **CLEAR**.




Right click and paste part number **18124** into the Part Number Window. Click Search button.

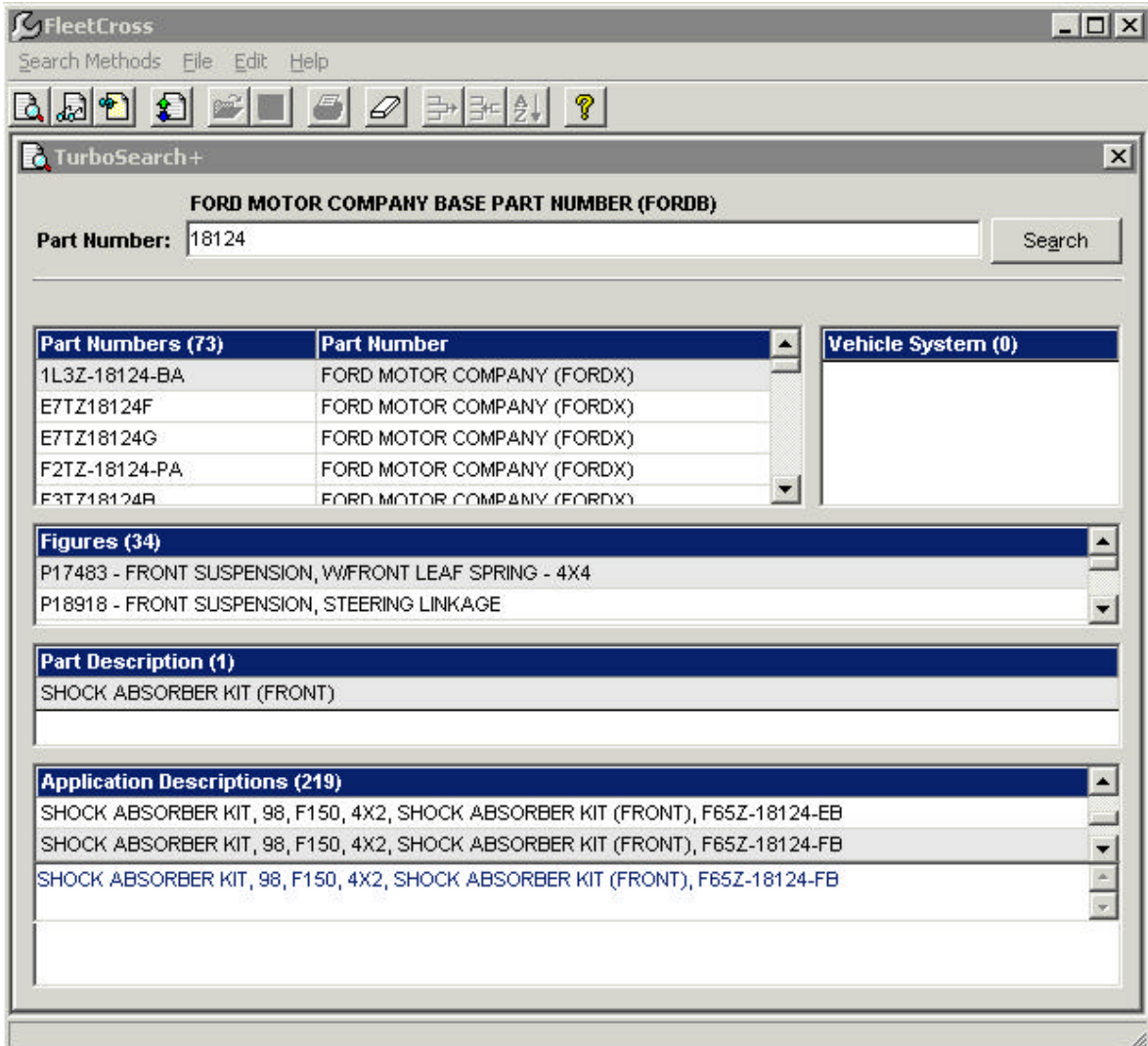


After searching part number **18124**, click on FORD MOTOR COMPANY BASE NUMBER in order to cross-reference to the **Ford complete** part numbers.




Here the search shows all applications of the base **FORD Part Number 18124** in the **Application Descriptions** Window. Each application contains the full part number.

To identify the appropriate full part number, go to the Application Description Window. Scroll the down arrow button . Look for the Application Description "**Shock Absorber Kit, 98, F150, 4X2, Shock Absorber Kit (Front) F65Z-18124-FB**".

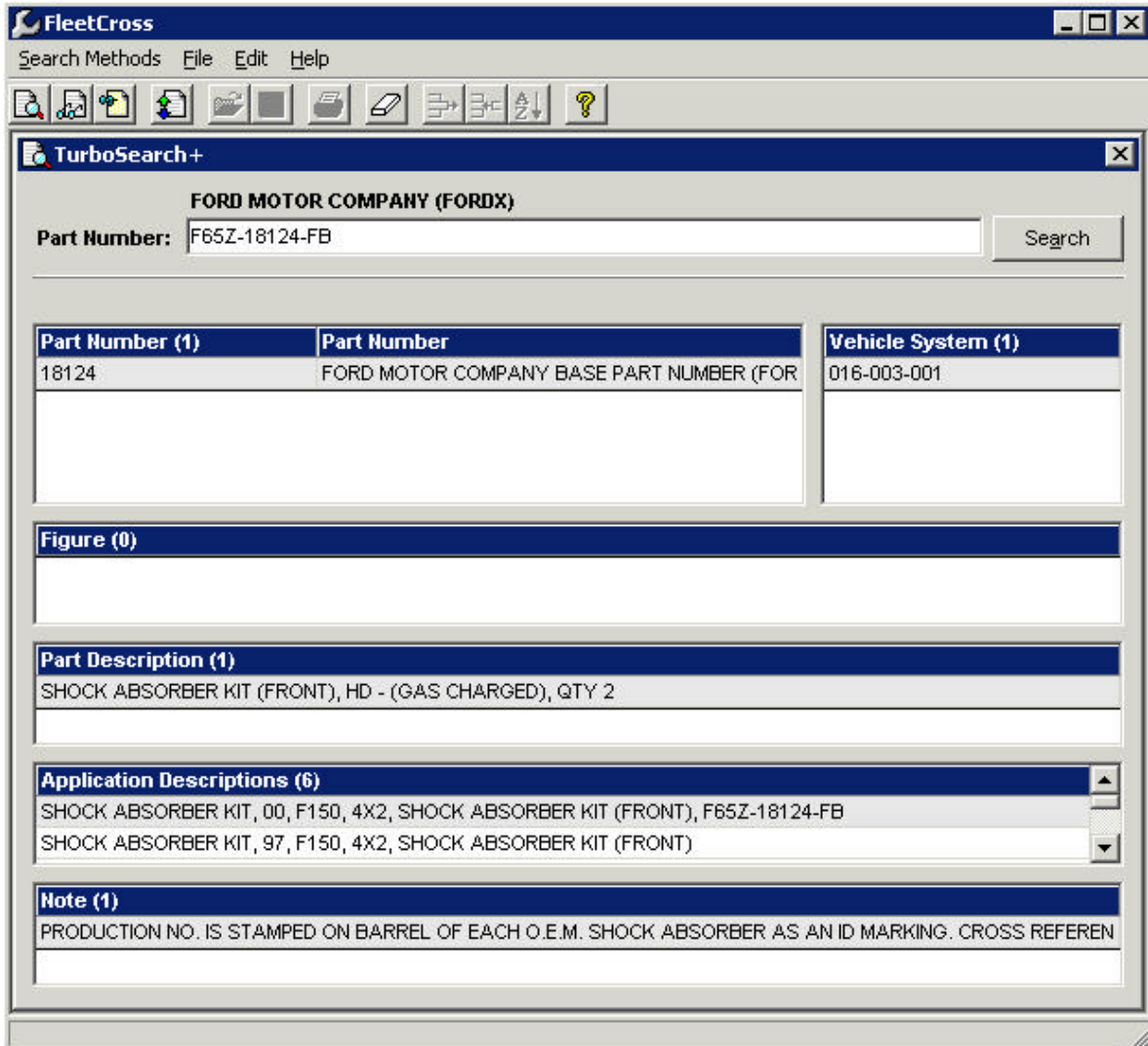


Double click this window to see and identify the full part number which is F65Z-18124-FB.

Left click, keeping mouse button down until you highlight part number **F65Z-18124-FB**. Right click and copy it for pasting into the TurboSearch+. 

Double Click the open **Application Description** window to close it.

Click **CLEAR** .



Right click and paste part number **F65Z-18124-FB** into the Part Number Window.

Click **Search** Button.

A search of **F65Z-18124-FB** shows a cross with the base number 18124.

Note that the **VMRS (Vehicle System Window)** code is **016003001** (**FRONT SHOCK ABSORBER ASSEMBLY**).

Click **CLEAR** .



Service Professionals, Inc.
1465 Jefferson Road
P.O. Box 93130
Rochester, New York, 14692-8130
585-256-0375
FAX 585-256-1507
e-mail: Information@FleetCross.com

Summary of FleetCross Features

TurboSearch

TurboSearch is the "information crossroad" for FleetCross. It is used to locate information by entering:

- a.) A known part number.
- b.) A known VMRS code (9 digit).
- c.) The name of a part or its abbreviation.

On one screen TurboSearch will tell you:

- a.) Where a part is used and what it's called.
- b.) The VMRS code for a part number or part name.
- c.) All cross reference part numbers and companies for a part number.
- d.) A direct linkage to a part illustration from the part number or its name.
- e.) How to record usage of a part number.

TurboDoc

TurboDoc is the "information library" for FleetCross. It is used to locate books of service information, parts references and bulletins by:

- a.) Entering either the beginning numerals or all numerals of an NCDPI **LEA** number, then
- b.) Selecting the vehicle system to be referenced.

TurboDoc will allow you to select:

- a.) All manuals.
- b.) All bulletins.
- c.) The specific pages of the service manuals or parts catalogs for the vehicle system you have chosen.

Benefits of FleetCross

All available information for NCDPI equipment 1996-2000 is included and will be kept updated. Next year 2001 and 2002 will be available.

Information has been sorted and linked by VMRS code. You do not have to know the codes. FleetCross will find them for you.

You only need a word or an NCDPI **LEA** number to get started.

You can print or electronically save the information you look up.

You can cross reference any part number to its aftermarket equivalents, if there are any.